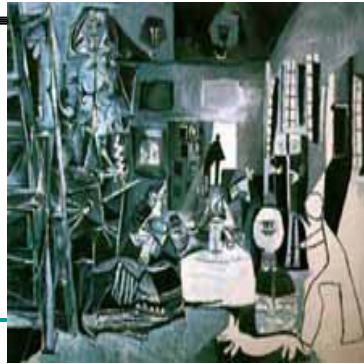


Pablo Picasso

1881 - 1973



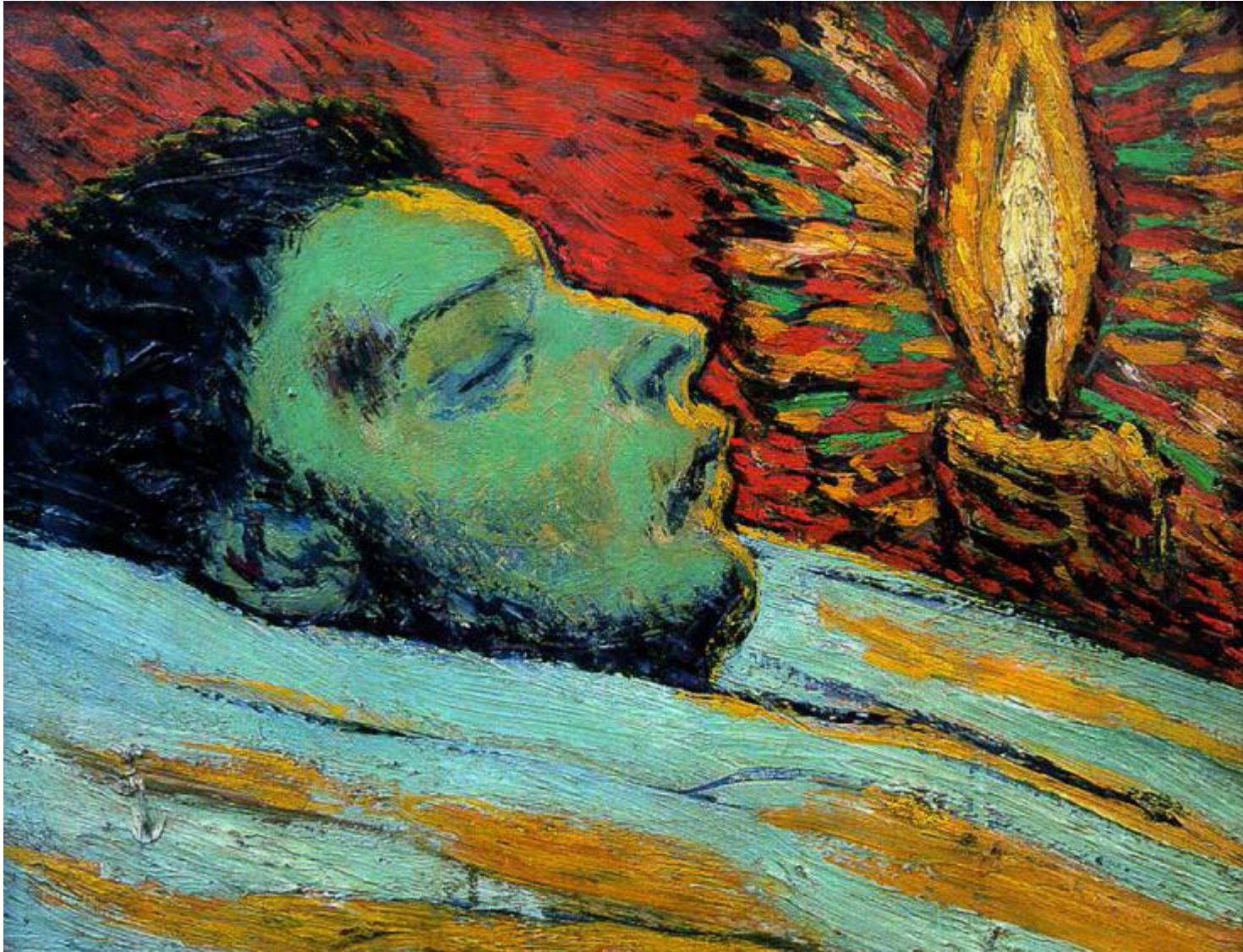
# The Blue Period

The **Blue Period** of Picasso is the period between 1900 and 1904, when he painted essentially monochromatic paintings in shades of blue and blue-green, only occasionally warmed by other colors. These somber works, inspired by Spain but painted in Paris, are now some of his most popular works, although he had difficulty selling them at the time.

In choosing austere color and sometimes doleful subject matter - beggars and drunks are frequent subjects - Picasso was influenced by a journey through Spain and by the suicide of a friend, who shot himself at café in Paris.

Picasso recalled, "I started painting in blue when I learned of Casagemas's death". He was not there when Casagemas committed suicide, but this dramatic event emerged in his painting, with several portraits of the deceased.

# Death of Casagemas 1901



# The Burial of Casagemas



The Absinth  
Drinker  
1901



The Blue Period work is quite sentimental, but we must keep in mind that Picasso was still in his late teens, away from home for the first time, and living in very poor conditions.

# Self Portrait with Cloak 1901

The young artist  
presents himself as  
the struggling  
painter, unshaven,  
somber, mysterious,  
while still remaining  
confident.



# Le Gormet 1901



# The Tragedy 1903



# Femme aux bras croises



The Old  
Guitarist  
1903



La Celestina  
1904



